



# Test Report

Report No.: TR20155123

Applicant The Wonderful Bear Emporium

Address 50 Fore Street, St Ives, Cornwall, TR26 1HE, UK

Report Date Dec. 29, 2015

Hangzhou C&K Testing Technic Co., Ltd.





## Test Report

<b>Applicant</b>	The Wonderful Bear Emporium
<b>Address</b>	50 Fore Street, St Ives, Cornwall, TR26 1HE, UK
<b>Sample Name</b>	“Treacle” the Dark Classic Bear Large
<b>Age Requested on Application Form</b>	All ages
<b>Age Grade Applied in Testing</b>	All ages
<b>Sample Received Date</b>	Dec. 18, 2015
<b>Test Period</b>	Dec. 18, 2015 ~ Dec. 29, 2015
<b>Test Requirement</b>	To determine the following test items in the submitted sample according to the client’s requirement.

Test Item(s)	Test Result(s)
EN 71-1:2014-Mechanical and Physical Properties (Excluding Clause 7)	Pass
EN 71-2:2011+ A1 :2014-Flammability	Pass
EN 71-3:2013+A1: 2014-Migration of certain elements	Pass

Complied by Crystal Su Inspected by Kale Zhang Authorized by Mark Li  
Mark Li/ Lab Manager



**Test Component(s):**

No.	Sample Serial No.	Test Component(s)
1	TR20155123001	“Treacle” the Dark Classic Bear Large
2	TR20155123002	Brown fabric on body
3	TR20155123003	Brown yellow fabric on ears/ face/ hand/ foot
4	TR20155170012	Brown black plastic eyes
5	TR20155170008	Velcro
6	TR20155170009	White lining
7	TR20155170010	White plastic in lining
8	TR20155187010	Black fabric on nose

**Remarks:**

- As per client’s request, the test results of components No. 4~ No. 7 are quoted from test report TR20155170.
- As per client’s request, the test results of component No. 8 are quoted from test report TR20155187.

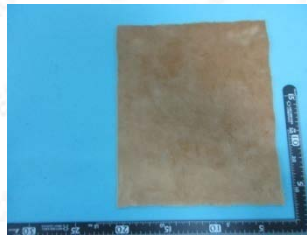
**Photo(s):**



1



2



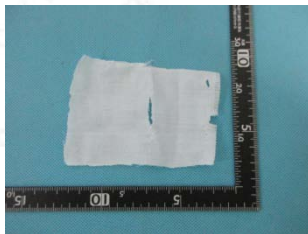
3



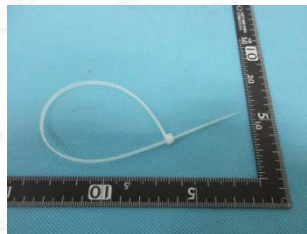
4



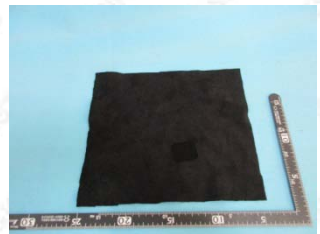
5



6



7



8



Overview  
TR20155123



**Mechanical and Physical Properties (Excluding Clause 7)**

As Specified in European Standard on Safety of Toys EN 71-1:2014

Clause	Test Item(s)	Test Result(s)
		1
4.1	Material cleanliness (visual check on cleanliness)	Pass
5	Toys intended for children under 36 months	Pass
5.1	General requirements	Pass
5.2	Soft-filled toys and soft-filled parts of a toy	Pass
5.7	Glass and porcelain	Pass
7	Warnings, markings and instructions for use	See Remark*

Remark: \*= It is drawn to your attention that either a principal component of a toy or the package of a toy shall be marked with the address & name of the producer or the distributor.

**Flammability**

As Specified in European Standard on Safety of Toys EN 71-2:2011+ A1:2014.

Clause	Test Item(s)	Test Result(s)
		1
4.1	General Requirements	Pass
4.5	Soft-filled toys	Pass



**Migration of certain elements**

(Category III: Scraped-off materials)

Test Method: EN 71-3:2013+A1: 2014

Test Item(s)	MDL	Limit	Unit	Test Result(s)				
				2	3	4	5	6
Extractable Lead (Pb)	0.55	160	mg/kg	N.D.	N.D.	N.D.	N.D.	N.D.
Extractable Antimony (Sb)	5	560	mg/kg	N.D.	N.D.	N.D.	N.D.	N.D.
Extractable Arsenic (As)	0.75	47	mg/kg	N.D.	N.D.	N.D.	N.D.	N.D.
Extractable Barium (Ba)	5	18750	mg/kg	N.D.	N.D.	N.D.	N.D.	N.D.
Extractable Cadmium (Cd)	0.1	17	mg/kg	N.D.	N.D.	N.D.	N.D.	N.D.
Extractable Mercury (Hg)	0.4	94	mg/kg	N.D.	N.D.	N.D.	N.D.	N.D.
Extractable Selenium (Se)	5	460	mg/kg	N.D.	N.D.	N.D.	N.D.	N.D.
Extractable Boron (B)	5	15000	mg/kg	N.D.	N.D.	N.D.	N.D.	N.D.
Extractable Cobalt (Co)	0.9	130	mg/kg	N.D.	N.D.	N.D.	N.D.	N.D.
Extractable Manganese (Mn)	5	15000	mg/kg	N.D.	N.D.	N.D.	N.D.	N.D.
Extractable Strontium (Sr)	5	56000	mg/kg	N.D.	N.D.	N.D.	N.D.	N.D.
Extractable Zinc (Zn)	5	46000	mg/kg	N.D.	N.D.	N.D.	N.D.	N.D.
Extractable Copper (Cu)	5	7700	mg/kg	N.D.	N.D.	N.D.	N.D.	N.D.
Extractable Aluminum (Al)	5	70000	mg/kg	N.D.	6	N.D.	N.D.	N.D.
Extractable Nickel (Ni)	5	930	mg/kg	N.D.	N.D.	N.D.	N.D.	N.D.
Extractable Tin (Sn)	5	180000	mg/kg	N.D.	N.D.	N.D.	N.D.	N.D.
Extractable Organic Tin	0.12	12	mg/kg	N.D.	N.D.	N.D.	N.D.	N.D.
Extractable Chromium (III) (CrIII)	5	460	mg/kg	N.D.	N.D.	N.D.	N.D.	N.D.
Extractable Chromium (VI) (CrVI)	0.005	0.2	mg/kg	N.D.	N.D.	N.D.	N.D.	N.D.

Remarks:

1. MDL = Method Detection Limit
2. N.D. = Not detected (<MDL)



**Migration of certain elements**

(Category III: Scraped-off materials)

Test Method: EN 71-3:2013+A1: 2014

Test Item(s)	MDL	Limit	Unit	Test Result(s)	
				7	8
Extractable Lead (Pb)	0.55	160	mg/kg	N.D.	N.D.
Extractable Antimony (Sb)	5	560	mg/kg	N.D.	N.D.
Extractable Arsenic (As)	0.75	47	mg/kg	N.D.	N.D.
Extractable Barium (Ba)	5	18750	mg/kg	N.D.	N.D.
Extractable Cadmium (Cd)	0.1	17	mg/kg	N.D.	N.D.
Extractable Mercury (Hg)	0.4	94	mg/kg	N.D.	N.D.
Extractable Selenium (Se)	5	460	mg/kg	N.D.	N.D.
Extractable Boron (B)	5	15000	mg/kg	N.D.	N.D.
Extractable Cobalt (Co)	0.9	130	mg/kg	N.D.	N.D.
Extractable Manganese (Mn)	5	15000	mg/kg	N.D.	N.D.
Extractable Strontium (Sr)	5	56000	mg/kg	N.D.	N.D.
Extractable Zinc (Zn)	5	46000	mg/kg	N.D.	N.D.
Extractable Copper (Cu)	5	7700	mg/kg	N.D.	N.D.
Extractable Aluminum (Al)	5	70000	mg/kg	N.D.	6
Extractable Nickel (Ni)	5	930	mg/kg	N.D.	N.D.
Extractable Tin (Sn)	5	180000	mg/kg	N.D.	N.D.
Extractable Organic Tin	0.12	12	mg/kg	N.D.	N.D.
Extractable Chromium (III) (CrIII)	5	460	mg/kg	N.D.	N.D.
Extractable Chromium (VI) (CrVI)	0.005	0.2	mg/kg	N.D.	N.D.

Remarks:

1. MDL = Method Detection Limit
2. N.D. = Not detected (<MDL)

\*\*\*The end of report\*\*\*