



Test Report

Report No.: TR20155131

Applicant The Wonderful Bear Emporium

Address 50 Fore Street, St Ives, Cornwall, TR26 1HE, UK

Report Date Dec. 29, 2015

Hangzhou C&K Testing Technic Co., Ltd.



Hangzhou C&K Testing Technic Co., Ltd

Add : 1/F, No. 4 Building, Huaye Hi-Tech Industrial Park, No. 1180, Bin'an Road, Binjiang District, Hangzhou 310052, China.

Hotline : 4006-721-723 Lab Tel : +86 571-8990 0710 Fax : +86 571-8990 0719 E-mail : test@circs-group.com Website : www.cirs-ck.com

The result(s) shown in this report refer only to the sample(s) tested unless otherwise stated. This report shall not be reproduced except in full, without written prior approval of Hangzhou C&K Testing Technic Co., Ltd.



Test Report

Applicant	The Wonderful Bear Emporium
Address	50 Fore Street, St Ives, Cornwall, TR26 1HE, UK
Sample Name	“Treacle” the Dark Classic Bear Small
Age Requested on Application Form	All ages
Age Grade Applied in Testing	All ages
Sample Received Date	Dec. 18, 2015
Test Period	Dec. 18, 2015 ~ Dec. 29, 2015
Test Requirement	To determine the following test items in the submitted sample according to the client’s requirement.

Test Item(s)	Test Result(s)
EN 71-1:2014-Mechanical and Physical Properties (Excluding Clause 7)	Pass
EN 71-2:2011+ A1 :2014-Flammability	Pass
EN 71-3:2013+A1: 2014-Migration of certain elements	Pass

Complied by Crystal Su Inspected by Kale Zhang Authorized by Mark Li
Mark Li/ Lab Manager



Test Component(s):

No.	Sample Serial No.	Test Component(s)
1	TR20155131001	“Treacle” the Dark Classic Bear Small
2	TR20155123002	Brown fabric on body
3	TR20155123003	Brown yellow fabric on ears/ face/ hand/ foot
4	TR20155170012	Brown black plastic eyes
5	TR20155170008	Velcro
6	TR20155170009	White lining
7	TR20155170010	White plastic in lining
8	TR20155187010	Black fabric on nose

Remarks:

1. As per client’s request, the test results of components No. 4~ No. 7 are quoted from test report TR20155170.
2. As per client’s request, the test results of component No. 8 are quoted from test report TR20155187.
3. As per client’s request, the test results of components No. 2~ No. 3 are quoted from test report TR20155123.

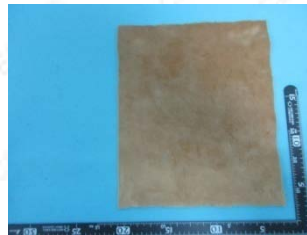
Photo(s):



1



2



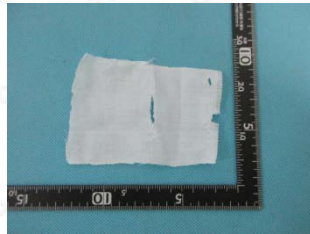
3



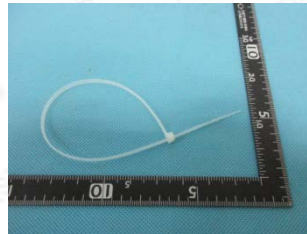
4



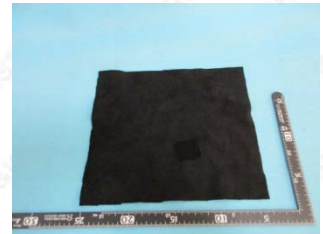
5



6



7



8



Overview
TR20155131



Mechanical and Physical Properties (Excluding Clause 7)

As Specified in European Standard on Safety of Toys EN 71-1:2014

Clause	Test Item(s)	Test Result(s)
		1
4.1	Material cleanliness (visual check on cleanliness)	Pass
5	Toys intended for children under 36 months	Pass
5.1	General requirements	Pass
5.2	Soft-filled toys and soft-filled parts of a toy	Pass
5.7	Glass and porcelain	Pass
7	Warnings, markings and instructions for use	See Remark*

Remark: *= It is drawn to your attention that either a principal component of a toy or the package of a toy shall be marked with the address & name of the producer or the distributor.

Flammability

As Specified in European Standard on Safety of Toys EN 71-2:2011+ A1:2014.

Clause	Test Item(s)	Test Result(s)
		1
4.1	General Requirements	Pass
4.5	Soft-filled toys	Pass



Migration of certain elements

(Category III: Scraped-off materials)

Test Method: EN 71-3:2013+A1: 2014

Test Item(s)	MDL	Limit	Unit	Test Result(s)				
				2	3	4	5	6
Extractable Lead (Pb)	0.55	160	mg/kg	N.D.	N.D.	N.D.	N.D.	N.D.
Extractable Antimony (Sb)	5	560	mg/kg	N.D.	N.D.	N.D.	N.D.	N.D.
Extractable Arsenic (As)	0.75	47	mg/kg	N.D.	N.D.	N.D.	N.D.	N.D.
Extractable Barium (Ba)	5	18750	mg/kg	N.D.	N.D.	N.D.	N.D.	N.D.
Extractable Cadmium (Cd)	0.1	17	mg/kg	N.D.	N.D.	N.D.	N.D.	N.D.
Extractable Mercury (Hg)	0.4	94	mg/kg	N.D.	N.D.	N.D.	N.D.	N.D.
Extractable Selenium (Se)	5	460	mg/kg	N.D.	N.D.	N.D.	N.D.	N.D.
Extractable Boron (B)	5	15000	mg/kg	N.D.	N.D.	N.D.	N.D.	N.D.
Extractable Cobalt (Co)	0.9	130	mg/kg	N.D.	N.D.	N.D.	N.D.	N.D.
Extractable Manganese (Mn)	5	15000	mg/kg	N.D.	N.D.	N.D.	N.D.	N.D.
Extractable Strontium (Sr)	5	56000	mg/kg	N.D.	N.D.	N.D.	N.D.	N.D.
Extractable Zinc (Zn)	5	46000	mg/kg	N.D.	N.D.	N.D.	N.D.	N.D.
Extractable Copper (Cu)	5	7700	mg/kg	N.D.	N.D.	N.D.	N.D.	N.D.
Extractable Aluminum (Al)	5	70000	mg/kg	N.D.	6	N.D.	N.D.	N.D.
Extractable Nickel (Ni)	5	930	mg/kg	N.D.	N.D.	N.D.	N.D.	N.D.
Extractable Tin (Sn)	5	180000	mg/kg	N.D.	N.D.	N.D.	N.D.	N.D.
Extractable Organic Tin	0.12	12	mg/kg	N.D.	N.D.	N.D.	N.D.	N.D.
Extractable Chromium (III) (CrIII)	5	460	mg/kg	N.D.	N.D.	N.D.	N.D.	N.D.
Extractable Chromium (VI) (CrVI)	0.005	0.2	mg/kg	N.D.	N.D.	N.D.	N.D.	N.D.

Remarks:

1. MDL = Method Detection Limit
2. N.D. = Not detected (<MDL)



Migration of certain elements

(Category III: Scraped-off materials)

Test Method: EN 71-3:2013+A1: 2014

Test Item(s)	MDL	Limit	Unit	Test Result(s)	
				7	8
Extractable Lead (Pb)	0.55	160	mg/kg	N.D.	N.D.
Extractable Antimony (Sb)	5	560	mg/kg	N.D.	N.D.
Extractable Arsenic (As)	0.75	47	mg/kg	N.D.	N.D.
Extractable Barium (Ba)	5	18750	mg/kg	N.D.	N.D.
Extractable Cadmium (Cd)	0.1	17	mg/kg	N.D.	N.D.
Extractable Mercury (Hg)	0.4	94	mg/kg	N.D.	N.D.
Extractable Selenium (Se)	5	460	mg/kg	N.D.	N.D.
Extractable Boron (B)	5	15000	mg/kg	N.D.	N.D.
Extractable Cobalt (Co)	0.9	130	mg/kg	N.D.	N.D.
Extractable Manganese (Mn)	5	15000	mg/kg	N.D.	N.D.
Extractable Strontium (Sr)	5	56000	mg/kg	N.D.	N.D.
Extractable Zinc (Zn)	5	46000	mg/kg	N.D.	N.D.
Extractable Copper (Cu)	5	7700	mg/kg	N.D.	N.D.
Extractable Aluminum (Al)	5	70000	mg/kg	N.D.	6
Extractable Nickel (Ni)	5	930	mg/kg	N.D.	N.D.
Extractable Tin (Sn)	5	180000	mg/kg	N.D.	N.D.
Extractable Organic Tin	0.12	12	mg/kg	N.D.	N.D.
Extractable Chromium (III) (CrIII)	5	460	mg/kg	N.D.	N.D.
Extractable Chromium (VI) (CrVI)	0.005	0.2	mg/kg	N.D.	N.D.

Remarks:

1. MDL = Method Detection Limit
2. N.D. = Not detected (<MDL)

The end of report